



International Journal of Fisheries and Aquatic Studies

E-ISSN: 2347-5129

P-ISSN: 2394-0506

(ICV-Poland) Impact Value: 5.62

(GIF) Impact Factor: 0.549

IJFAS 2018; 6(3): 06-12

© 2018 IJFAS

www.fisheriesjournal.com

Received: 02-03-2018

Accepted: 03-04-2018

JW Murugami

(1) University of Nairobi, College of Agriculture and Veterinary Sciences, Department of Veterinary Pathology, Microbiology and Parasitology, P.O. Box 29053-00625, Kangemi, Nairobi Kenya

(2) Sokoine University of Agriculture, College of Veterinary and Medical Sciences, Department of Veterinary Medicine and Public Health, P. O. Box 3021, Morogoro, Tanzania

RM Waruiru

University of Nairobi, College of Agriculture and Veterinary Sciences, Department of Veterinary Pathology, Microbiology and Parasitology, P.O. Box 29053-00625, Kangemi, Nairobi Kenya

PG Mbutia

University of Nairobi, College of Agriculture and Veterinary Sciences, Department of Veterinary Pathology, Microbiology and Parasitology, P.O. Box 29053-00625, Kangemi, Nairobi Kenya

KW Maina

(1) University of Nairobi, College of Agriculture and Veterinary Sciences, Department of Veterinary Pathology, Microbiology and Parasitology, P.O. Box 29053-00625, Kangemi, Nairobi Kenya

(2) Sokoine University of Agriculture, College of Veterinary and Medical Sciences, Department of Veterinary Medicine and Public Health, P. O. Box 3021, Morogoro, Tanzania

AG Thaiyah

University of Nairobi, College of Agriculture and Veterinary Sciences, Department of Clinical studies, P.O. Box 29053-00625, Kangemi, Nairobi Kenya

SK Mavuti

Directorate of Veterinary Services, Ministry of Agriculture, Livestock and Fisheries, P.O. Box Private Bag, Kangemi, Kenya

RO Otieno

University of Nairobi, College of Agriculture and Veterinary Sciences, Department of Veterinary Pathology, Microbiology and Parasitology, P.O. Box 29053-00625, Kangemi, Nairobi Kenya

HA Ngowi

Sokoine University of Agriculture, College of Veterinary and Medical Sciences, Department of Veterinary Medicine and Public Health, P. O. Box 3021, Morogoro, Tanzania

RH Mdegela

Sokoine University of Agriculture, College of Veterinary and Medical Sciences, Department of Veterinary Medicine and Public Health, P. O. Box 3021, Morogoro, Tanzania

Correspondence

JW Murugami

(1) University of Nairobi, College of Agriculture and Veterinary Sciences, Department of Veterinary Pathology, Microbiology and Parasitology, P.O. Box 29053-00625, Kangemi, Nairobi Kenya

(2) Sokoine University of Agriculture, College of Veterinary and Medical Sciences, Department of Veterinary Medicine and Public Health, P. O. Box 3021, Morogoro, Tanzania

Helminth parasites of farmed fish and water birds in Kirinyaga County, Kenya

JW Murugami, RM Waruiru, PG Mbutia, KW Maina, AG Thaiyah, SK Mavuti, RO Otieno, HA Ngowi and RH Mdegela

Abstract

Aquaculture products demand has increased due to population growth, declining natural fish stocks and government aquaculture promotion. Intensification alters natural fish environment and new infections emerge. Parasite infested fish are unaesthetic. Public health concerns arise with zoonotic fish parasites. Piscivorous birds influence aquaculture profitability due to predation and transmission of fish parasites. 289 fish from 15 private farms and one government farm were sampled in Kirinyaga County, Kenya. Earthen pond fish had higher (52%) parasite infestation than those from liner (7%) and concrete ponds. Fish parasites recovered were *Diplostomum* spp. (tilapia 21.7%; catfish 10.5%), *Acanthocephala* spp. (tilapia 11.3%; catfish 3.5%), *Dactylogyrus* spp. (tilapia 3%; catfish 4.7%) *Contracaecum* (catfish 24.4%), *Paracamallanus* spp. (catfish 16.3%) *Gyrodactylus* spp. (catfish 5.8%) and *Clinostomum* spp. (tilapia 4.9%). Fifty water birds were captured using mist nets. On necropsy, 46% were infected with parasites like *Acanthocephala* spp. (16%), Pseudophyllid and Protecephallid cestodes (36%) *Contracaecum* spp. (2%) and *Clinostomum* spp. (2%). *Clinostomum* spp., *Contracaecum* spp. and *Acanthocephala* spp. are zoonotic. Farmers, traders and consumers should be advised on handling and cooking fish to avoid infestation with zoonotic parasites. Control of piscivorous birds and other predators should be effected to maximize the profitability of fish farming.

Keywords: Fish parasites, piscivorous birds, aquaculture, *Clinostomum*, *Contracaecum*

1. Introduction

The increased trends in fish farming over recent years in Kenya has brought about the need to monitor the health of fish stock to produce fish that is safe for human consumption. Intensification in aquaculture alters the natural environment for fish hence new infections are cropping up due to increased stress levels and reduced immunity [1]. Kenya in its vision 2030 aims to be a food secure country with fish farming forming one of the strategic pillars. The demand for aquaculture products is high due to a rapidly growing population, declining natural fish stocks and active fish farming promotion by the government [2].

Fish are known to be hosts to various ecto- and endo-parasites. Fish infested with parasites can be unsightly and their market value greatly decreased [3]. There are also public health concerns as some fish parasites are zoonotic [4, 5]. Intensive fish farming encourages propagation of parasites and can result to serious outbreaks. The number of parasites necessary to cause harm to fish varies considerably with fish species, size, and health status [6]. Tilapia and catfish are the common species of fish farmed in many regions in Kenya. Helminths affecting fish include Platyhelminthes (flatworms) and Nematelminthes (round worms). Flatworms of the class monogenea are ectoparasites infesting skin and gills of fish while digeneans and cestodes are endoparasites. Intermediate stages of digenean parasites are found in fish as metacercariae while adult stages are in predatory birds and mammals. Most helminth parasites have indirect life cycles involving one or more intermediate hosts. Studies on fish parasites have been done in some regions in Kenya [7-10]. Information is still lacking on the nomenclature of some fish parasites, their life cycles and those of public health concern in farmed fish in Kenya.

In aquaculture, water birds influence profitability of fish farming due to predation [11] and being involved in the life cycle of fish parasites [12]. Fish eating birds are spread throughout the fish farming regions of Kenya with their numbers differing between seasons. They include: Ciconiiformes (storks, egrets, hamerkops and herons), Plecaniiformes (cormorants and darters), and Halcyniiformes (kingfishers).

Predatory birds have been observed in many regions preying on fish from ponds. They are definitive hosts of fish parasites like, *Clinostomum* spp. [13], *Diplostomum* spp. [14], *Contracaecum* spp. [15] and Gryporhynchidae cestodes [16] among others. Studies on type and extent of fish predation in Kenya are few with only Ogoma (2012) [17] undertaking a baseline survey on water birds and fish farmers conflict in coastal Kenya. There is no adequate documentation of the specific role of water birds in the life cycles of various fish parasites in Kenyan aquaculture other than the study of Gustinelli *et al.* (2010) [13] on herons. Thus, this study was conducted to determine occurrence of fish parasites and link them to those found in piscivorous birds in Kenya.

2. Materials and Methods

2.1 Study area

This study was done in Kirinyaga County, Kenya, which is found 100 km North East of Nairobi, at an altitude of 1230 m above sea level, latitude 0°39'S and longitude 37°12'E. Annual temperatures range between 12 °C and 26 °C and annual precipitation averages about 1250mm. Three sub counties were purposively selected based on the availability of active fish ponds and presence of fish predatory birds. These were Kirinyaga Central, Kirinyaga West and Mwea East.

2.2 Sampling

The sample size (n) was determined using the formula of Naing *et al.* (2006) [18]: $n = \frac{z^2 p(1-p)}{d^2}$ Where, z is the z value for the corresponding confidence level (1.96 for 95% confidence); d is the precision (5%) and p is the estimated proportion of a sample that have the condition of interest {15% parasitic prevalence (Otachi *et al.*, 2011) [19]}. This gave a minimum sample size of 200 fish. A list of fish farmers was obtained from the county Fisheries Department. Those with active fish ponds were identified and their verbal consent sought before sampling. Fifteen private farms and one government farm were selected where ten fish per pond were purchased. More fish were purchased in one government farm and one private farm where higher presence of fish predatory birds was noted during the study period. During the study period, 50 tilapia from Kirinyaga Central, 51 tilapia and 40 catfish from Mwea East and 102 tilapia and 46 catfish from Kirinyaga West sub-counties were acquired. Fish were transported live to the laboratory where they were sacrificed and post mortem examination done using standard procedures [3, 20]. Direct microscopic examination at X10 and X40 was done on samples from the skin, gills, eyes and intestine for any parasites. The gastrointestinal tract from the fish was collected and preserved in 70% ethanol for parasitological analysis.

Capture of water birds was done with permission from Kenya Wildlife Service. Mist nets were set up in Sagana Aquaculture Center and Mwea Aqua fish farm to capture the birds. Fifty water birds of different species were captured during the study period. The birds were transported to the laboratory in cages where they were euthanized by cervical dislocation and post mortem examination done as described by Brown (2012) [21]. The gastrointestinal tract from the birds was collected and preserved in 70% ethanol for parasitological analysis.

2.3 Isolation and identification of parasites

Fish and bird intestines were opened longitudinally using

scissors and dissecting pins. The contents were expressed, washed with water and scanned for parasites using a dissecting microscope. Parasites isolated were counted and observed on a compound microscope at X10 and X40 magnification. Parasite identification guides by Chubb *et al.* (1987), Hoffman (1999), Woo (2006) and Roberts (2012) [3, 14, 22, 23] were used in the morphologic identification of parasites isolated.

2.4 Data analysis

Data were entered into the computer, cleaned and sorted using Microsoft Excel 2016 and analyzed using the Statistical Package for Social Sciences (SPSS version 16.0) and Epi Info version 7. Descriptive statistics consisting of frequencies were computed for different data categories to facilitate comparisons of parasitic infestations between fish farms, fish species and water birds. Chi square test was used to compare proportions and prevalence of parasite infestations. Student's t-test and p values were used to determine statistical significance of the results.

3. Results

3.1 Helminth parasites of fish

Out of the total 289 fish, 203 were tilapia with a mean weight of 130.5 ± 79.5 g while 86 were catfish with a mean weight of 392 ± 2.88 g. Of these, 20% (10/50) from Kirinyaga Central, 34% (31/90) from Mwea East and 52% (77/148) from Kirinyaga West sub-counties were infested with at least one species of parasites. Fish from earthen ponds (52%) (114/219) were found to be more infested with parasites than liner (7%) (4/60) and concrete ponds (0/10). Piscivorous birds and snails of the genus *Melanoides* were noted in many areas.

3.2 Prevalence of fish helminth parasites

The prevalence of parasites recovered from the sub-counties are shown in Fig 1. The highest prevalence of *Diplostomum* spp. was in Mwea East sub-county. *Contracaecum* spp. and *Clinostomum* spp. were isolated from Kirinyaga West sub-county only.

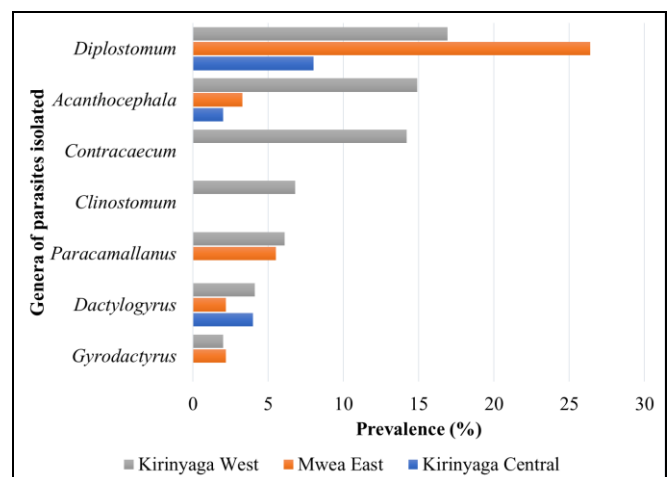


Fig 1: Prevalence of fish helminth parasites in Kirinyaga County

Among the farms visited during the study period, two farms namely Sagana Aquaculture Center in Kirinyaga West sub-county and Mwea Aqua fish farm in Mwea East sub-county had significantly higher parasitic infestations ($p < 0.05$) than the rest of the farms with an infestation rate of 69% and 68% respectively while the rest had a below 50% level of infestation. Mwea Aqua Fish Farm had a higher infestation

with *Diplostomum* spp. (59%) than Sagana Aquaculture Center (23%). *Contracaecum* spp., *Acanthocephala* spp. and *Clinostomum* spp. were isolated from Sagana Aquaculture Center and were not found in Mwea Aqua Fish Farm (Fig 2). However, there was no significant difference between overall parasitic infestation rates of the two farms ($p>0.05$).

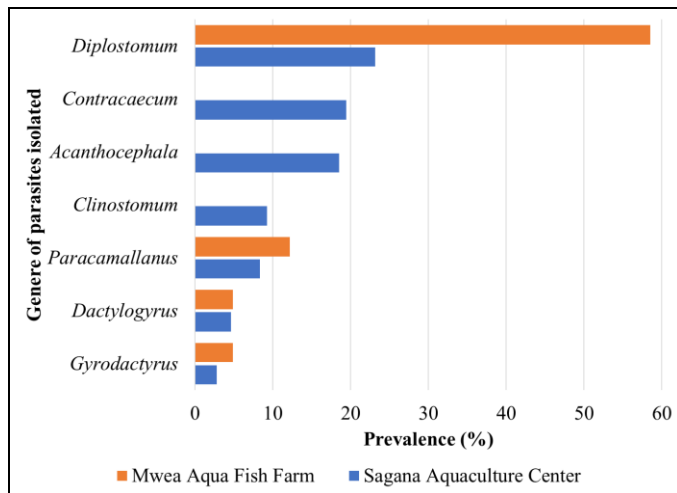


Fig 2: Prevalence of parasites from the major breeding farms

In all, 39% (79/203) of tilapia and 45% (39/86) of catfish examined were infested with at least one species of helminth parasite. There was no significant difference between the infestation rates of the two species ($p=0.45$, risk ratio=0.86). There was also no significant difference of infestation between fish sexes as 39% (82/208) of males and 44% (36/81) of females had at least one species of parasite ($p=0.57$, risk ratio=0.89). However, fish recovered from earthen ponds (52%) (114/163) had significantly higher parasitic infestations relative to those from liner ponds (7%) (4/60) ($p<0.05$, risk ratio=7.43). The overall prevalence of various helminth parasites recovered from the fish are shown in Table 1. *Contracaecum* spp., *Gyrodactylus* spp., and *Paracamallanus* spp. were recovered from catfish only while *Clinostomum* spp. was recovered only from tilapia fish.

Table 1: Prevalence of helminth parasites recovered from different fish organs in Kirinyaga County

Parasite (Genus)	Organ	Prevalence (%)	
		Tilapia	Catfish
<i>Acanthocephala</i>	Intestines	11.3	3.5
<i>Clinostomum</i>	Muscles, skin	4.9	0.0
<i>Contracaecum</i>	Abdominal cavity	0.0	24.4
<i>Dactylogyrus</i>	Gills	3.0	4.7
<i>Diplostomum</i>	Eyes	21.7	10.5
<i>Gyrodactylus</i>	Skin, gills	0.0	5.8
<i>Paracamallanus</i>	Intestines	0.0	16.3

3.3 Intensities of fish helminths

3.3.1 Monogeneans

The monogeneans isolated were *Dactylogyrus* spp. and *Gyrodactylus* spp. (Fig 3). The mean intensity of *Dactylogyrus* spp. in tilapia was 1.2 ± 0.4 while, in catfish it was 1.3 ± 0.5 with an abundance range of 0-2 parasites in both species. There was no statistical difference between the intensities in the two species ($t=-0.29$; $df=8$). The intensities in male and female fish were 1.0 and 1.3 ± 0.5 respectively which was not significantly different ($t=-0.98$; $df=8$).

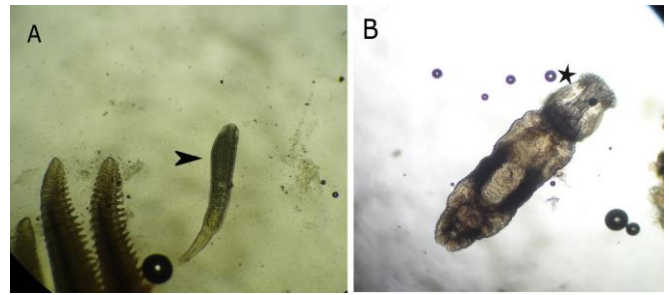


Fig 3: A). *Dactylogyrus* spp. from the gills of tilapia (arrow head) and B). *Gyrodactylus* spp. from the skin of catfish showing the haptor (star)

3.3.2 Digeneans

The mean intensity of *Diplostomum* spp. (Fig 4) in tilapia was 2.5 ± 2.2 with an abundance range of 0-10 while, in catfish it was 1.9 ± 1.4 worms per eye with an abundance range of 0-5 in the sampled fish. There was no significant difference in the intensities of *Diplostomum* spp. in the two species ($t=0.783$; $df=51$). The mean intensity in the males was 2.6 ± 2.3 while, in females was 1.4 ± 0.7 showing no statistical difference ($t=1.675$; $df=51$).

Clinostomum spp. was isolated from tilapia only with a mean intensity of 9.6 ± 14.7 (std. error=4.7) with a range of 1-48 metacercarial cysts per fish in the infested fish. The mean intensity of *Clinostomum* in the male fish was 5.2 ± 7.1 while in female fish was 19.7 ± 24.8 which was not statistically different ($t=-1.507$; $df=8$).

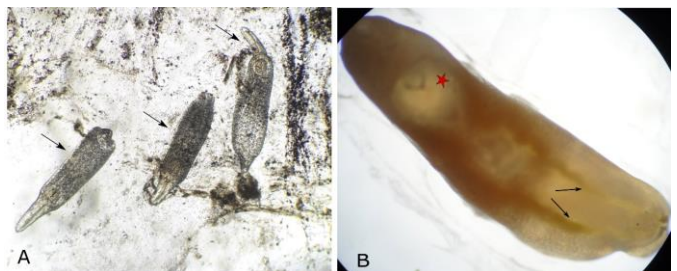


Fig 4: *Diplostomum* spp (arrows) recovered from the vitreous humor of examined fish (A) and *Clinostomum* spp from the skin of tilapia showing the anterior sucker (red star) and intestinal caeca (arrows) (B)

3.3.4 Cestodes

Two catfish from Sagana National Aquaculture Center were infested with a Pseudophyllidean and a Proteocephallid tapeworm, respectively (Fig 5).

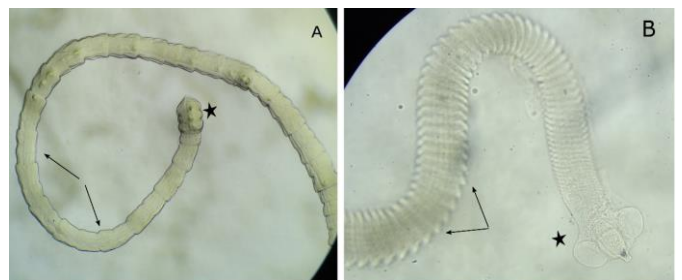


Fig 5: A). Pseudophyllidean and B). Proteocephallid cestodes from the intestines of catfish showing the scolex (star) and proglottids (arrows)

3.4 Intensity of nematode parasites

3.4.1 *Contracaecum* species

Contracaecum spp. (Family Anisakidae) was isolated from the peritoneal cavity of 20 catfish from Sagana National Aquaculture Center with a range of 2-56 worms per fish (Fig 6). The overall mean intensity was 15 ± 13.3 (std. error=3) worms per fish. The mean intensity in males was 15.1 ± 9.5 while, in females was 14.8 ± 16.2 and was not significantly different ($t=0.048$; $df=18$).

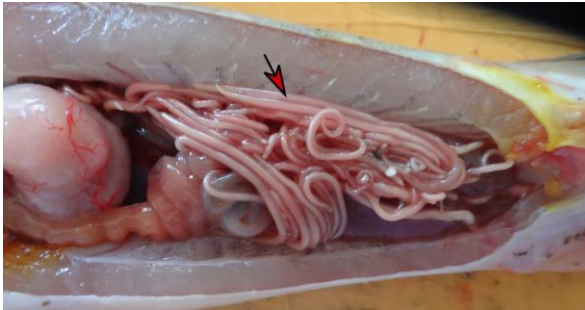


Fig 6: *Contracaecum* worms (arrow) in the peritoneal cavity of catfish from Sagana Aquaculture Center

3.4.2 *Paracamallanus* species

These worms were isolated from catfish with an abundance of 0-12 and a mean intensity of 3.8 ± 3.1 worms in the infested fish (Fig 7). The mean intensity in males was 3.7 ± 2.1 while in females was 4 ± 5.3 showing no statistical difference ($t=0.033$; $df=12$).

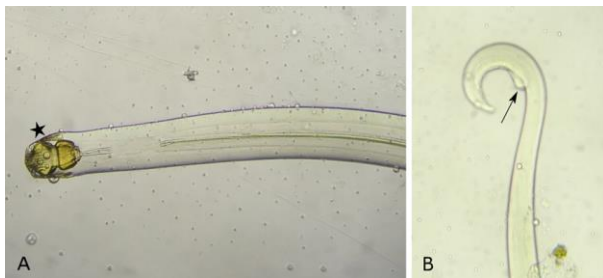


Fig 7: Anterior segment (A) of *Paracamallanus* spp. from the intestines of catfish showing the buccal capsule (star) and Posterior segment (B) with the genital flap (arrow)

3.5 Intensity of Acanthocephala species

Acanthocephalan worms were common in both catfish and tilapia (Fig 8). The mean intensity in tilapia was 1.5 ± 0.8 with an abundance range of 0-4 and while, in catfish it was 1. The mean intensity was not significantly different between tilapia and catfish ($t=1.05$; $df=24$). The mean intensity in males was 1.5 ± 0.8 while, in females it was 1.4 ± 0.9 showing no statistical difference ($t=0.185$; $df=24$).



Fig 8: *Acanthocephala* spp. showing proboscis with hooks (arrow) (A) and with retracted proboscis (B)

3.6 Parasitic infestations of water birds

Piscivorous birds of different species were captured from Sagana Aquaculture Center and Mwea Aqua Fish Farm. Of the 50 water birds of different species captured, 46% (23/50) were infested with at least one species of helminth parasite on necropsy examination. Infested birds whose diets mainly consists of fish include the herons, kingfisher, cormorant, spoonbill and hamerkop.

3.7 Prevalence of helminths in piscivorous birds

Of the captured birds, 34% (11/32) from Sagana Aquaculture Center and 67% (12/18) from Mwea Aqua Fish Farm were infested with at least one species of helminth parasite.

3.7.1 Acanthocephalans

One pied kingfisher (*Ceryle rudis*), two giant kingfishers (*Megaceryle maxima*), one wood sandpiper (*Tringa glareola*), one great painted snipe (*Rostratula benghalensis*), two hamerkops (*Scopus umbretta*) and one Temminck's stilt (*Calidris temminckii*) had acanthocephalan worms on necropsy examination. The overall prevalence of acanthocephalan worms was 16% and were only recovered in birds from Mwea Aqua Fish Farm.

3.7.2 Cestodes

The overall prevalence of cestode infestation in water birds from the two farms was 36%. These were isolated from one black winged stilt (*Himantopus himantopus*), one striated heron (*Butorides striata*), two giant kingfishers, two great painted snipes, three (3) three banded plovers (*Charadrius tricollaris*), two temminck's stilts, one common snipe (*Gallinago gallinago*), one grey heron (*Ardea cinerea*), one long toed plover (*Calidris subminuta*), one reed cormorant (*Microcarbo africanus*), one African spoonbill (*Platalea alba*), one spur winged plover (*Vanellus miles*) and one yellow billed duck (*Anas undulata*). Dilepidid cestodes (Cyclophyllidea) were identified in the cormorant and Proteocephalid cestodes from the African spoonbill (Fig 9, Fig 10).

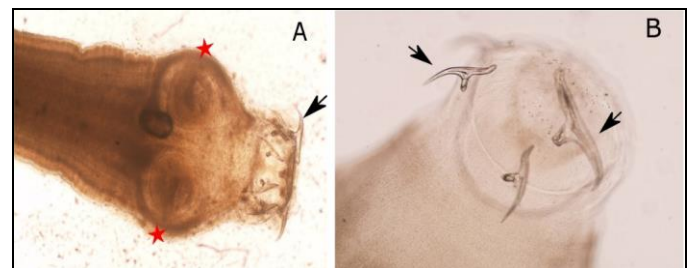


Fig 9: Armed scolexes of Dilepidid cestodes (A and B) from the reed cormorant with hooks (arrows)



Fig 10: Cestode scolexes isolated from the African spoonbill (A and B) showing suckers (red stars) and hooks (arrows)

3.7.3 Nematodes

Adult *Contracaecum* spp. (Family Anisakidae) were only isolated from one grey heron from Sagana Aquaculture Center (Fig 11) with a 2% prevalence.

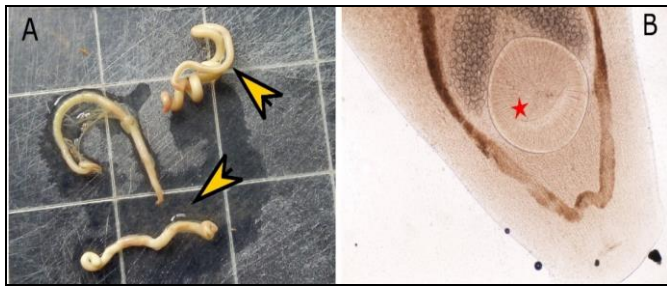


Fig 11: Adult *Contracaecum* spp. (arrows) (A) and *Clinostomum* spp. (B) from the grey heron showing the anterior sucker (red star)

3.7.4 Digenean trematodes

Clinostomum spp. was recovered from one grey heron from Sagana Aquaculture Center with an overall prevalence of 2% (Fig 11).

3.8 Comparison of parasites of fish and birds

Parasites were common to both fish and water birds. The prevalence of *Acanthocephala* spp. in fish was 11.3% in tilapia and 3.5% in catfish while in birds it was 16%. *Contracaecum* spp. was present in catfish and grey heron while *Clinostomum* spp. was present in tilapia and grey heron. Cestode parasites were recovered from catfish and birds including the reed cormorant and African spoonbill.

4. Discussion

Kirinyaga West Sub-county had the highest parasite infestation levels due to presence of Sagana Aquaculture Center which was frequented by many species of birds. The same scenario was replicated in Mwea Aqua Fish Farm in Mwea East sub-county which had the highest *Diplostomum* spp. infestations. Migration of birds poses a risk of spreading parasites and other disease causing pathogens from one region to another. At times, it is difficult to completely keep birds off fish farms without incurring costs. During this study, it was established that parasites are equally common to fish (tilapia and catfish) as well as water birds. Of the water birds sampled, the fish-eaters were infested with more than one species of parasites. Piscivorous birds play a role in the life cycles fish parasites and also cause losses when they feed on fish. Earthen ponds had the highest levels of parasitic infestations due to the interplay of vegetation growth, presence of snails and piscivorous birds in these ponds.

Monogenean trematodes reported in this study were *Dactylogyrus* spp. and *Gyrodactylus* spp. Poor management practices like overstocking of fish ponds and poor environmental promote heavy infestations with monogeneans and can result to fish losses [24]. Though monogeneans have a direct life cycle, it is possible for other hosts like birds to be infested as accidental hosts and spread the parasites [25]. Two Digenean parasites, *Diplostomum* spp. and *Clinostomum* spp. were recovered in this study. The metacercariae of Diplostomatid eye flukes are found in the vitreous humor of the eyes in fish without major pathological effects. However, cases of cataract are seen with *D. spathecum* which is found non-encysted in the lens. This causes blindness and fish are more prone to predation [26]. This was however not recovered in this study. The adult forms of digenean parasites are found

in piscivorous birds [27]. Snails of the genus *Melanoides*, known intermediate hosts of digenean trematodes were recovered in various sampling sites. *Clinostomum* species of the 'cutaneum' group were isolated in both fish and piscivorous birds (grey heron) in agreement with a study by Gustinelli *et al.* (2010) [13], that was done in Sagana Aquaculture Center. This parasite causes 'yellow grubs' that make fish unsightly when present in large numbers. This causes economic losses due to rejection by consumers [3, 5]. Human cases of *Clinostomum* spp. infestation have been reported in Korea [28] and Japan [29] hence a public health concern. Human infection has not been reported in Kenya. Cestodes of the families Dilepididae, Pseudophyllidae and Proteocephallidae were recovered in birds more than fish. Only two catfish had a tapeworm each in the intestines. Water birds, mainly piscivorous species have been reported to harbor tapeworms which can spread to fishes and humans. Cyclophyllidean cestodes of the family Dilepididae have been described in piscivorous birds in Mexico [30]. Proteocephalidae cestodes [31, 32] also affect fish. *Diphyllobothrium latum*, *Proteocephalus* spp. and *Caryophyllaeidea* spp have been reported in Kenya by Khamis *et al.* (2017). *Diphyllobothrium* spp have been reported to be zoonotic [33]. This species was however not recovered during this study.

Fish nematodes recovered in this study were *Contracaecum* and *Paracamallanus* spp. in catfish only. *Contracaecum* in catfish has been reported in other regions in Kenya [9, 10] and Zimbabwe [34]. This parasite has been reported in tilapia and carp in other studies [5, 35, 36]. Sagana Aquaculture Center had a 19% prevalence of *Contracaecum* spp. Although this farm kept both tilapia and catfish, some even in the same ponds, tilapia species were not infested with *Contracaecum* spp. This parasite was also recorded in piscivorous birds by Barson and Marshall, (2004) [15] in Zimbabwe by genetic and electric microscopy comparisons of the larvae from fish and adults from birds. Parasites of the Anisakidae family are reported to be zoonotic. Allergic reactions have been reported where sensitization occurs on ingesting live parasites in raw fish or those killed by cooking or pasteurization [37]. Experimental infestation of *Contracaecum* spp. in the domestic cat resulted to successful development to adults causing hemorrhages in the intestine [38]. *Contracaecum* spp. is thus an important parasite with zoonotic potential. Camallid nematodes were recovered in catfish. These are common parasite to this species of fish without major pathological effects [39].

Acanthocephalans, or thorny-headed worms commonly parasitize fish, amphibians, birds and mammals. Low and moderate infestations result to localized changes but heavy infestations have been reported to cause granulomas and fibrosis in the intestines [40]. Florio *et al.* (2009) [5] described infestations of tilapia fish with *Acanthosentis tilapia* in East Africa. Infestations of humans with acanthocephalans after eating raw or undercooked fish has been documented [41].

Piscivorous birds, mainly herons, cormorants and ibis which had more parasitic infestations were difficult to capture using mist nets in the fairly open landscape of Sagana Aquaculture Center and Mwea Aqua Fish Farm. During this study, mist nets were the available capture method as the capture permit restricted use of shooting to catch specific birds. Bird capture methods can be fairly expensive hence restricting our options due to financial and time constraints.

5. Conclusions

- Water birds and fish were infested with helminth parasites

- Earthen ponds were more predisposed to parasite infestations than liner and concrete ponds.
- Parasites of zoonotic importance like *Clinostomum* spp, *Contracaecum* spp and *Acanthocephala* spp. were identified in farmed fish in Kirinyaga County.

6. Recommendations

- Farmers should be made aware of risks of parasitic infestations and other diseases of fish and the need to consult qualified experts in such cases
- Farmers, traders and consumers should be advised on handling and cooking fish to avoid infestation with zoonotic parasites
- Proper predator control methods should be undertaken in fish farms

7. Acknowledgements

We would like to acknowledge the Capacity Building for Training and Research in Aquatic and Environmental Health in Eastern and Southern Africa (TRAHESA) project by the Norwegian Agency for Development Cooperation (NORAD) for financing this work. We are also grateful to the Kirinyaga County fisheries office, Dr. Thadeus Obari (Kenya Wildlife Service) and Mr. Edson Mlamba (National Museums of Kenya) for their support during this study.

8. References

1. Mennerat A, Nilsen F, Ebert D, Skorping A. Intensive Farming: Evolutionary Implications for Parasites and Pathogens. *Evolutionary Biology*. 2010; 37(2):59-67.
2. Rothuis A, van Duijn AP, van Rijsingen J, van der Pijl W, Rurangwa E. Business Opportunities for Aquaculture in Kenya with Special Reference to Food Security. *The Hague: Wageningen Aquaculture*; 2011, 132.
3. Roberts RJ. *Fish Pathology*. Fourth ed. Wiley-Blackwell, 2012, 581.
4. Hung N, Dung D, Lan Anh N, Van P, Thanh B, Van Ha N *et al*. Current status of fish-borne zoonotic trematode infections in Gia Vien district, Ninh Binh province, Vietnam. *Parasites and Vectors*. 2015; 8(1):21.
5. Florio D, Gustinelli A, Caffara M, Turci F, Quaglio F, Konecny R *et al*. Veterinary and public health aspects in tilapia (*Oreochromis niloticus niloticus*) aquaculture in Kenya, Uganda and Ethiopia. *Ittiopatologia*. 2009; 6(12):51-93.
6. Iwanowicz DD. Overview on the Effects of Parasites on Fish Health. *Proceedings of the Third Bilateral Conference between Russia and the United States. Bridging America and Russia with Shared Perspectives on Aquatic Animal Health*. 2011, 176-184.
7. Aloo PA. A comparative study of helminth parasites from the fish *Tilapia zillii* and *Oreochromis leucostictus* in Lake Naivasha and Oloidien Bay, Kenya. *Journal of helminthology*. 2002; 76:95-104.
8. Migiro KE, Matolla GK, Ouko OV, Victor NM. Diplostomum Parasites Affecting *Oreochromis niloticus* in Chepkoilel Fish farm and Two Dams in Eldoret-Kenya. *International Journal of Scientific and Engineering Research* 2012; 3(7):3-9.
9. Khamis HM, Ali AI, Lusweti D, Orina PS. Prevalence And Diversity Of Internal Cestode Parasites Of The Nile Tilapia (*Oreochromis Niloticus*) And African Catfish (*Clarias Gariepinus*) In Different Altitudes And Ponds In Kenya. *International Journal of Innovative Research and Advanced Studies*. 2017; 4(5):220-224.
10. Mavuti SK, Waruiru RM, Mbuthia PG, Maina JG, Mbaria JM, Otieno RO. Prevalence of ecto-and endoparasitic infections of farmed tilapia and catfish in Nyeri County, Kenya. *International Journal of Innovative Research and Advanced Studies*. 2017; 29(6):55.
11. Lekuona JM. Food intake, feeding behaviour and stock losses of cormorants, *Phalacrocorax carbo*, and grey herons, *Ardea cinerea*, at a fish farm in Arcachon bay (southwest France) during breeding and non-breeding season. *Folia Zoologica*. 2002; 51(1):23-34.
12. Beckmann C, Biro PA, Post JR. Asymmetric impact of piscivorous birds on size-structured fish populations. *Canadian Journal of Zoology*. 2006; 84(11):1584-1593.
13. Gustinelli A, Caffara M, Florio D, Otachi EO, Wathuta EM, Fioravanti ML. First description of the adult stage of *Clinostomum cutaneum* Paperna, 1964 (Digenea: Clinostomidae) from grey herons (*Ardea cinerea* L.) and a redescription of the metacercaria from the Nile tilapia *Oreochromis niloticus niloticus* (L.) in Kenya. *Systematic Parasitology*. 2010; 76(1):39-51.
14. Woo P. *Fish Diseases and Disorders, Protozoan and Metazoan Infections*. Second Ed. (Woo P, ed.). CAB International, 2006, 802.
15. Barson M, Marshall BE. First record of *Contracaecum* spp. (Nematoda: Anisakidae) in fish-eating birds from Zimbabwe. *Journal of the South African Veterinary Association*. 2004; 75(2):74-78.
16. Ortega-Olivares MP, Barrera-guzmán AO, Haasová I, Salgado-Maldonado G, Guillén-Hernández S, Scholz T. Tapeworms (Cestoda: Gryporhynchidae) of Fish-Eating Birds (Ciconiiformes) from Mexico: New Host and Geographical Records. *Comparative Parasitology*. 2008; 75(2):182-195.
17. Ogoma M. Waterbirds - aquaculture conflict: Baseline survey of sustainable birds control in village fish farms, Kenya. *African Bird Club United Kingdom*, 2012, 1-13.
18. Naing L, Winn T, Rusli BN. Practical Issues in Calculating the Sample Size for Prevalence Studies. *Archives of Orofacial Sciences*. 2006; 1(1):9-14.
19. Otachi E, Wathuta E, Magana A, Fioravanti ML, Florio D. Comparative Ecological Analysis of Fish Parasitofauna in a Hub- Plot Aquaculture System: Implications for Aquaculture in Kenya. *Egerton Journal of Science and Technology*. 2011; 11:87-103.
20. Kane AS, Baya A, Reimschuessel R, St-Pe KM, Poukish CA, Driscoll CP. Necropsy examination of fish. *Virginia Journal of Science*. 1999; 50(4):345-364.
21. Brown C. *A Field Manual for Collection of Specimens to Enhance Diagnosis of Animal Diseases*. University of Georgia, Department of Veterinary Pathology Athens, Georgia. 2012, 1-17.
22. Hoffman GL. *Parasites of North American Freshwater Fishes*. Cornell University Press; 1999, 345.
23. Chubb JC, Pool DW, Veltkamp CJ. A key to the species of cestodes (tapeworms) parasitic in British and Irish freshwater fishes. *Journal of Fish Biology*. 1987; 31(4):517-543.
24. Hecht T, Endemann F. The impact of parasites, infections and diseases on the development of aquaculture in sub-Saharan Africa. *Journal of Applied Ichthyology*. 1998; 14(3-4):213-221.
25. Strona G. The underrated importance of predation in transmission ecology of direct lifecycle parasites. *Oikos*.

- 2015; 124(6):685-690.
26. Seppala O, Karvonen A, Valtonen ET. Manipulation of fish host by eye flukes in relation to cataract formation and parasite infectivity. *Animal Behaviour*. 2005; 70(4):889-894.
 27. King PH, As JG Van. Description of the Adult and Larval Stages of *Tylodelphys xenopi* (Trematoda: Diplostomidae) from Southern Africa. *The Journal of Parasitology*. 1997; 83(2):287-295.
 28. Chung DI, Moon CH, Kong HH, Choi DW, Lim DK. The first human case of *Clinostomum complanatum* (Trematoda: Clinostomidae) infection in Korea. *The Korean journal of parasitology*. 1995; 33(3):219-223.
 29. Hara H, Miyauchi Y, Tahara S, Yamashita H. Human laryngitis caused by *Clinostomum complanatum*. *Nagoya journal of medical science*. 2014; 76(1-2):181.
 30. Scholz T, Kuchta R, Salgado-Maldonado G. Cestodes of the family Dilepididae (Cestoda: Cyclophyllidae) from fish-eating birds in Mexico: A survey of species. *Systematic Parasitology*. 2002; 52(3):171-182.
 31. De Chambrier A, Scholz T, Beletew M, Mahmoud ZN. Redescription of *Proteocephalus sulcatus* (Klaptocz, 1906) (Cestoda: Proteocephalidae), a poorly known parasite of *Clarotes laticeps* (Pisces: Siluriformes) in the Sudan. *Revue Suisse De Zoologie*. 2007; 114(4):693-702.
 32. Scholz T, Drábek R, Hanzelová V. Scolex morphology of *Proteocephalus* tapeworms (Cestoda: Proteocephalidae), parasites of freshwater fish in the Palaearctic Region. *Folia Parasitologica*. 1998; 45(1):27-43.
 33. Chai JY, Murrell KD, Lymbery AJ. Fish-borne parasitic zoonoses: Status and issues. *International Journal for Parasitology*. 2005; 35(11):1233-1254.
 34. Barson M. The occurrence of *Contraecaecum* sp. larvae (Nematoda: Anisakidae) in the catfish *Clarias gariepinus* (Burchell) from Lake Chivero, Zimbabwe. *The Onderstepoort journal of veterinary research*. 2004; 71(1):35-39.
 35. Aloo PA. Occurrence of larval *Contraecaecum* (Nematoda: Heterocheilidae) in three teleostean fish species from lake Naivasha, Kenya. *East African Journal of Science*. 2001; 3(1):1-12.
 36. Mathenge GC. Prevalence, Intensity and Pathological Lesions Associated With Helminth Infections in Farmed and Wild Fish in Upper Tana River Basin, Kenya. University of Nairobi, 2010.
 37. McCarthy J, Moore TA. Emerging helminth zoonoses. *International Journal for Parasitology*. 2000; 30(12):1351-1359.
 38. Vidal-Martínez VM, Osorio-Sarabia D, Overstreet RM. Experimental Infection of *Contraecaecum multipapillatum* (Nematoda: Anisakinae) from Mexico in the Domestic Cat. *Journal of Parasitology*. 1994; 80(4):576-579.
 39. Barson M, Bray R, Ollevier F, Huysse T. Taxonomy and faunistics of the helminth parasites of *Clarias gariepinus* (Burchell, 1822), and *Oreochromis mossambicus* (Peters, 1852) from temporary pans and pools in the Save-Runde river floodplain, Zimbabwe. *Comparative Parasitology*. 2008; 75(2):228-240.
 40. Paperna I. Parasitic helminths of inland-water fishes in Israel. *Israel Journal of Zoology*. 1964; 13(1):1-26.
 41. Schmidt GD. Acanthocephalan Infections of Man, with Two New Records. *Journal of Parasitology*. 1971; 57(3):582-584.