



# International Journal of Fisheries and Aquatic Studies

ISSN: 2347-5129

(ICV-Poland) Impact Value: 5.62

(GIF) Impact Factor: 0.352

IJFAS 2016; 4(1): 364-369

© 2016 IJFAS

www.fisheriesjournal.com

Received: 15-11-2015

Accepted: 16-12-2015

**Mardja Tahri**

Université El Tarf,  
B.P. 73, El Tarf 36000, Algeria.

**Alain J. Crivelli**

Station Biologique de la Tour du  
Valat, Le Sambuc, Arles, France.

**Jacques Panfili**

IRD, UMR MARBEC,  
Université de Montpellier,  
France.

**Mourad Bensouilah**

Laboratoire d'écobiologie des  
milieux marins et littoraux,  
Université Badji Mokhtar,  
Annaba.

## Health status of the swim bladder of the European eel *Anguilla anguilla* in northeastern Algeria's Lake Oubeïra

**Mardja Tahri, Alain J. Crivelli, Jacques Panfili, Mourad Bensouilah**

### Abstract

While there have many numerous studies regarding the spread of the nematode *Anguillicoloides crassus* in its host, few of these have addressed the pathology itself. In the present work, we examined the status of the swim bladders of European eels populating Lake Oubeïra, by assessment of their Swim bladder Degenerative Index (SDI). We found that the 450 eels that we captured were aged between 19 and 79 months, and that they exhibited an extremely fast growth rate.

Our assessment of the REPRODUCTIVE capacity of the European EELS (EELREP) [13] revealed that 3.78% had not undergone sexual differentiation, while 95.78% were females, of which more than half were silvered; and only 0.45% were silvered males. The parasitism by *Anguillicoloides crassus* exhibited the following epidemiological parameters: P=50.44%, I=7.04±3.18 parasites per swim bladder, and A=3.74±2.04 parasites per eel (the latter varies significantly with the SDI). Lastly, we noticed that 95% of the examined swim bladders were damaged (the SDI varied between 1 and 5) and that this worm does not spare any age group.

**Keywords:** eels, swim bladder, SDI, *Anguillicoloides crassus*, otolith, Oubeïra

### 1. Introduction

Introduction of exotic parasites has been frequently expounded in the scientific literature [8], as is the case for the nematode *Anguillicoloides crassus* [25]. Its introduction in Europe corresponds with the importation of the Japanese eel *Anguilla japonica* to Germany from Taiwan and New Zealand [33, 37]. The recent association between the parasite and its definitive host *Anguilla anguilla* is thought to be the cause of a pronounced pathology [22, 31, 41]. It has consequently also caused a considerable decline in the population of eels in Europe as well as in the North Africa [24, 29]. Thus, the European eel *A. anguilla*, recently considered 'outside safe biological limits' [18] has become red-listed as 'Critically Endangered' [16]. Repeated infections during the continental life of the eel generally lead to profound damage to the swim bladder, and this may impair their spawning migration to the Sargasso Sea [7, 15, 25, 34]. *Anguillicoloides crassus* has a complex life cycle that includes one obligatory intermediate host (copepods), and one non-obligatory paratenic host (small fish) [10, 42, 43] that is the origin for the infestation of the population of eels in Algerian hydro-systems following the introduction of carp fry by importation from Hungary.

Studies of the European eel have been performed at the various hydro-systems in the extreme northeast of Algeria where this fish is typically found [12, 26, 28]. These studies only focused on the inventory of the parasites in lakes, rivers, and lagoons; without consideration of the pathological aspect or the parasitic chronology of the fish. Indeed, the most severe stage of the infection depends on the health status of the swim bladder (e.g. anatomical deformations and physiological dysfunction resulting from the infestation), rather than on the number of parasites in this organ [24].

The objective of the present study was to evaluate the current infection rate (by lumen worms) and past infections (e.g. as evidenced by damage to the swim bladders) of the European eels that populate Lake Oubeïra (Northern Africa).

**Correspondence**

**Mardja Tahri**

Université El Tarf,  
B.P. 73, El Tarf 36000, Algeria.

**2. Materials and Methods**

**2.1. Study area**

Lake Oubeira is a fresh water lake with a surface area that covers 2,200 hectares, and that has a maximal depth of 4m. It is located approximately 4 km from the shores of the

Mediterranean sea, at N36°50, E08°23 (Fig. 1). It is a designated wilderness area (registered with the "RAMSAR" Convention) of the Parc National d'El Kala that has the unique distinction of hosting the most important wetland complex of the Maghreb area [5].

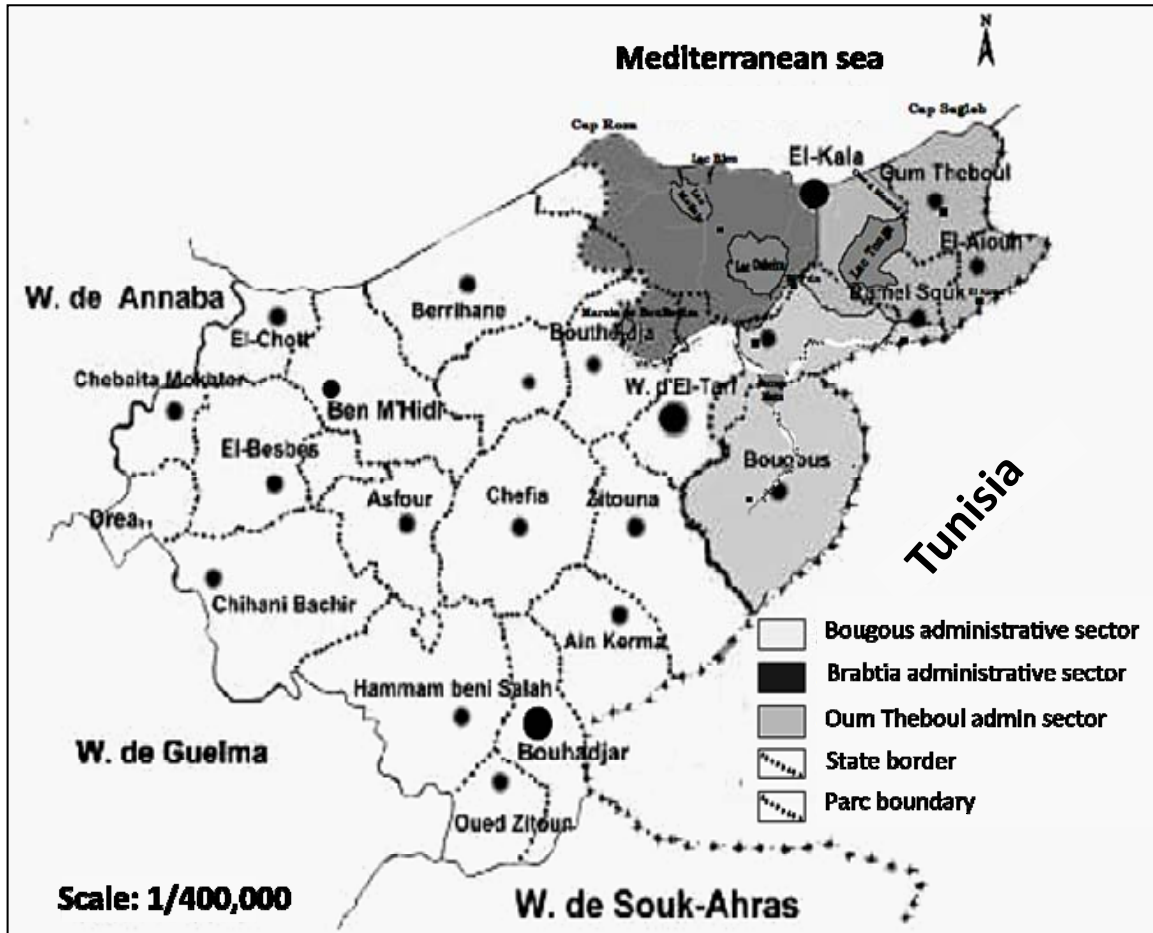


Fig 1: Lake Oubeira, in northeastern Algeria.

The average monthly temperature of the water ranges from 8.8 °C to 15.2 °C in January. The average air temperature, determined for a period of 28 years from 1968-1969 until 1995-1996, is 17.50 °C. For January (the coldest month) this value is 11.65 °C and for August (the hottest month) it is 25 °C [5].

There is currently no hydraulic management framework for the lake, and recruitment of the populations of eels is done by natural means.

**2.2. Capture and treatment of the eels**

Sampling was carried out monthly (30 fish) between November 2010 and May 2012. Eels were captured using nets with a 10 mm mesh, they were brought back alive to the laboratory on ice and then weighed (total mass, Wt, to the nearest 0.1 g) and measured (total length, Lt, in mm).

The protocol for assessment of the Swim bladder Degenerative Index (SDI) was adapted from Lefebvre *et al.* [24]. This index is based on macroscopically visible alterations in the swim bladder, and it ranges from 0 to 6. The index comprises 3 criteria (each one being given a score of 0, 1, or 2) which are:

the thickness, the opacity, and the pigmentation of the swim bladders.

The parasites in the swim bladders were removed and counted upon dissection. Species identification was performed using a stereoscopic microscope. Lastly, classical epidemiological parameters (e.g. prevalence, mean intensity, and abundance) were calculated [6].

The non-parametric test of Kruskal-Wallis was used in this study.

**2.3. Otolith analysis**

The neatness of the otolith growth marks of the captured eels allowed us to interpret them directly without prior preparation using a Leica WILD M3Z microscope with reflected light against a dark background. Assessment of their age was done by counting of the winter rings [36].

For modeling of growth of the eel population in question we used the following Von Bertalanffy (FCVB) equation:  $L_t = L_\infty (1 - e^{-K(t-t_0)})$

Lt: total length;

L∞, K and t0: parameters to be determined.

### 3. Results

#### 3.1 The captured eels

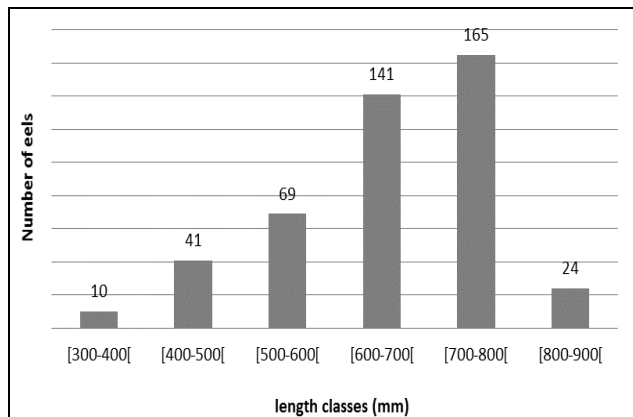


Fig 2: Size distribution ranges for eels captured between 2010 and 2012 (N=)

Over the course of 15 months we captured 450 eels, ranging in size from 300 mm to 895 mm (Fig. 2).

The relationship between the size (Lt) and the total weight (Wt) can be described as follows:  $Wt=1E-07Lt^{3,3973}$

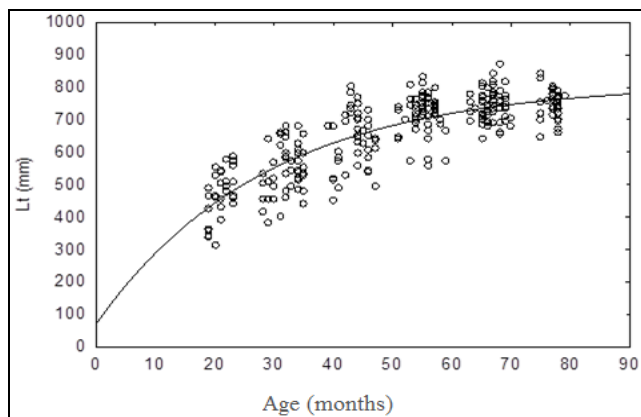


Fig 3: Modeling of the growth of captured eels according to the Von Bertalanffy formula ( $L_t=L_\infty*(1-e^{-K*(age-t_0)})$ ) (N =294).

The age of the eels populating Lake Oubeira ranged from 19 to 79 months, and they exhibited an extremely fast rate of growth (Fig. 3).

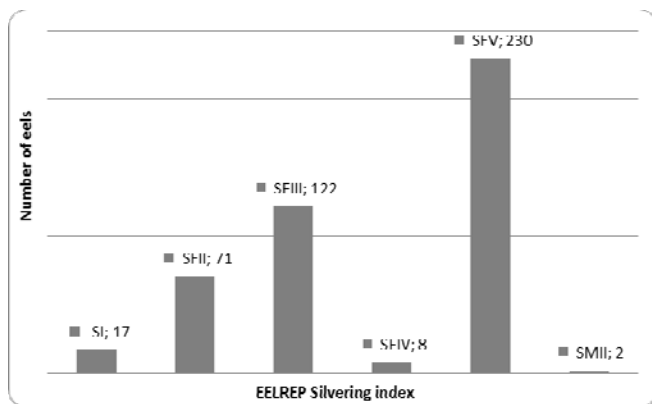


Fig 4: Classification of the EELREP index in terms of the degree of silvering in Lake Oubeira.

According to the EELREP classification of the degree of silvering, we encountered 17 eels that were not sexually differentiated (SI); 2 males; and 431 female eels, of which 238 were silvers (Fig. 4).

#### 3.2. Parasitism by *Anguillicoloides crassus*

The extent of eel infestation by *Anguillicoloides crassus* in Lake Oubeira was 50.44%.

The mean intensity was  $7.04\pm 3.18$  parasites per swim bladder, and the mean abundance was  $3.74\pm 2.04$  parasites per eel.

During the study period, we counted up to 55 parasites in a single swim bladder.

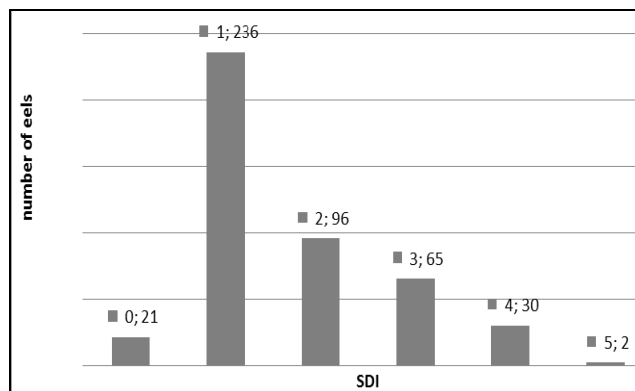


Fig 5: Distribution of the Swim bladder Degenerative Index (SDI) in Lake Oubeira (SDI; number of eels)

The above graph (Fig. 5) shows the frequency distribution of the SDI. A value of 0 corresponds with an intact swim bladder, values from 1 to 3 correspond with a moderately damaged swim bladder, while values from 4 to 6 correspond with a severely damaged swim bladders (at a value of 6, no lumen is left).

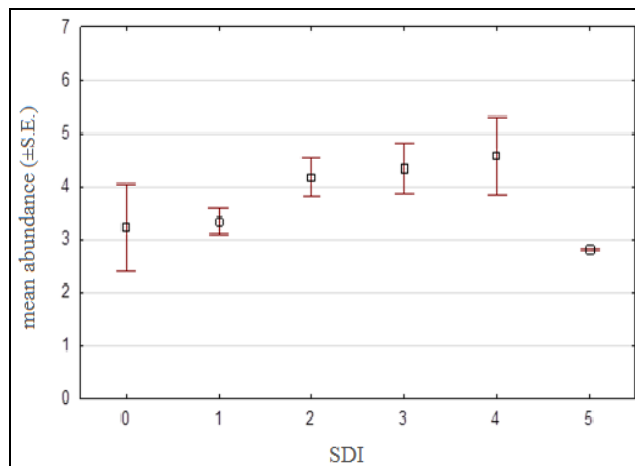


Fig 6: Mean abundance (±S.E.) of *Anguillicoloides crassus* by SDI.

The mean abundance of *Anguillicoloides crassus* (Fig. 6) varied significantly as a function of the values of the Swim bladder Degenerative Index (SDI) (Kruskal-Wallis test  $H(4,450)=14,6213$ ;  $P<0,0005$ ).

### 4. Discussion

Of the 450 eels captured during the study period (November 2010-May 2012), more than half of the population were migrant silver females. Their size ranged from 300 mm to 895

mm, with a high proportion of the eels falling into the 600-800 mm size range. The mean size of females silvering increased with the size of the watershed, indicating that the physical context of the watershed exercised a degree of control over the sexual differentiation of the eels [1], and thus also over the reproductive potential of the watershed. This preponderance of large female eels was also a reflection of the use of nets with a 10 mm mesh. Due to the selectivity of the fishing gear, the distribution of the observed sizes does not fully reflect the size distribution of the whole eel population in Lake Oubeira.

This size distribution is similar to the one observed by other investigators at the same study site (330-380 mm); on the other hand, eels were found to be much smaller (230-630) in the El Mellah lagoon [12].

In Europe, the size of the silver females that were captured at 38 different sites ranged from 450 to 863 mm [46]. Regarding the other species of eels; their American neighbor *Anguilla rostrata* has been reported to have a mean size of 853 mm [45], while female Japanese *Anguilla japonica* are 614±40.5 mm in size [44], and the mean size of Australian *Anguilla australis* is 945 mm [40].

The sampled eels exhibited a very rapid rate of growth. This may be explained by the effect of the environment's temperature on the specimens (the average temperature of the lake being close to 17 °C). The growth rate (GR) is higher in habitats that are in proximity to the sea and that are at greater depths [9].

Furthermore, a high degree of variation in size for a given age was observed for a population, and substantial differences in size ranges have been reported for the various age groups of *Anguilla anguilla* [2, 39, 30, 35]. These disparities could be partially due to interpretation of their age, while the large diversity in environments that the eels occupy may also contribute to the observed variation in growth, as a result of the productivity of the environment (e.g. availability of food) and the density of eels (e.g. competition). Lastly, eel size has been shown to increase as the distance from the sea increases [4].

Assessment of the nematode *Anguillicoloides crassus* infestation rates highlights that it infests essentially half (50.44%) of the sub-population that we studied. This infestation amounted to 7.04±3.18 and 3.74±2.04 parasites per swim bladder and per eel, respectively. Very similar findings have been reported for eels in the Mafrag estuary (P=46%, A=2.02 worms per fish) [3] and in the fresh water bodies of the Parc National d'El Kala (e.g. lakes Tonga and Oubeira), for which the author reports that there are 4-5 times more worms in these sites than in the El Mellah lagoon [12].

Others authors [25] have confirmed that high salinities limit, if not preclude, high infestation rates by *Anguillicoloides crassus*. In light of this, they have proposed using salinity as a natural mean for disease control. Such a measure has in fact already received backing from many ichthyoparasitologists and eel specialists [19-21, 27, 38].

In the Sebou estuary in Morocco, the infestation exhibits seasonal variations, fluctuating from 12.79% to 55.36%. The prevalence and abundance are relatively high, and they have been positively correlated with the length and weight of the fish [14]. In the Bizerte and Ghar El Melh lagoons of Tunisia, where the salinity approaches that of seawater (33-34‰), the nematode is present for just one to three months of the year, while also exhibiting low epidemiological values [17]. Lastly, a 2 year survey of four habitats in the Camargue area (Rhône delta, South of France) revealed a negative relationships

between parasitic parameters (e.g. prevalence, mean intensity, and abundance) and salinity values of (i.e. a prevalence of 52% in brackish waters to 77% in fresh waters) [23].

To date, all of the studies of anguillicolosis in North Africa have been limited to the determination of conventional parasitic parameters, and no studies have been carried out regarding the Swim bladder Degenerative Index (with the exception of the recent study in 2014 by Dhaouadi *et al.*). Yet as of 2005, EELREP has recommended reliance on the SDI, as described by Lefebvre *et al.* [24], to obtain an indication of prior swim bladder infestation, as well as to gain information in regard to their functional status.

During this study, we noticed that more than 95% of the examined swim bladders were degraded (the SDIs ranged from 1 to 5), and that all eel age groups were infested. A Tunisian study [11] has reported an average swim bladder degenerative index of 0.28; and that 6.09% of the eels exhibited signs of previous infection, while 9.75% appeared to have either prior or current infections. More extensive damage has been observed in French lagoons, where 92% of the eels exhibited pathological signs of infection, and the severely damaged swim bladders harbored very few live nematodes [23]. Lastly, *A. crassus* infection has been determined to be widespread in Portugal's brackish water systems, where 67% of the swim bladders were found to be damaged; SDI=1.31±1.23 [32].

## 5. Conclusion

This study highlights the following points:

- \*The eels populating Lake Oubeira exhibit an extremely fast rate of growth;
- \*Determination of the EELREP silvering index revealed that 3.78% were not sexually differentiated (SI); 95.78% were females (of which more than the half were silvered) and 0.45% were silvered males;
- \*The abundance of *Anguillicoloides crassus* varied significantly according to the SDI;
- \*The SDI varies according to the size and age of the captured eels.

## 6. References

1. Adam G, Feunteun E, Prouzet P, et Rigaud C. coord. L'anguille européenne Indicateurs d'abondance et de colonisation, Projet Indicang, Edition Quae ed, 2008, 393.
2. Bertin L. Les anguilles. Payot, Paris, 1951.
3. Boudjadi Z, Tahri M, Djebari N, Hamza I. et Bensouilah M. Etude de l'infestation des anguilles (*Anguilla anguilla*) par le nématode (*Anguillicola crassus*) dans l'estuaire du Mafrag (Algérie). Mésogée, 2009; 65:59-66.
4. Boulenger C, Acou A, Trancart T, Crivelli A. J. et Feunteun E. Length-weight relationships of the silver European eel, *Anguilla anguilla* (Linnaeus, 1758), across its geographic range. J. Applied Ichthyology, 2015, 1-4.
5. Boumezbeur A. Réserve intégrale du lac Oubeira, Wilaya El Tarf. Fiche descriptive sur les zones humides Ramsar. Ministère de l'agriculture et du développement rural, 2003, 7.
6. Bush A.O, Lafferty K.D, Lotz J.M. et Shostak A. W. Parasitology meets ecology on its own terms: Margolis *et al.* revisited. J Parasitol. 1997; 83:575-583.
7. Clevestam P.D, Ogonowski M, Sjöberg N.B. et Wickström H. Too short to spawn? Implications of small body size and swimming distance on successful migration and maturation of the European eel *Anguilla anguilla*. J Fish Biol. 2011; 78:1073-1089.

8. Combes C. Interactions durables. Ecologie et évolution du parasitisme. Masson, Paris, 1995.
9. Daverat F, Beaulaton L, Poole R, Lambert P, Wickström H, Andersson J *et al.* One century of eel growth: changes and implications. Ecology of Freshwater Fish, 2012, 1-12.
10. De Charleroy D, Grisez L, Thomas K, Belpaire C. et Ollevier F. The life cycle of *Anguillicola crassus*. Dis. Aquat. Organ, 1990; 8:77-84.
11. Dhaouadi R, Sghaier A, Aloui N, Rejeb A, Tarhouni D, Dargouth M.A. *et al.* Etude de l'infestation de l'anguille européenne, *Anguilla anguilla*, par le nématode *Anguillicoloides crassus* dans la lagune de Ghar El Melh (Nord de la Tunisie). Mar. Life. 2014 ; 18:17-24.
12. Djebbari N, Boudjadi Z. et Bensouilah M.L. Infestation de l'anguille *Anguilla anguilla* L., 1758 par le parasite *Anguillicola crassus* Kuwahara, Niimi & Itagaki, 1974 dans le complexe de zones humides d'El Kala (Nord-Est algérien). Bulletin de l'Institut Scientifique, Rabat, section Sciences de la Vie. 2009; 31(1):45-50.
13. EELREP. Estimation of the reproduction capacity of European eel. Quality of Life and Management of Living Resources. Final report Period I Nov 2001-31 Jan 2005.
14. El-Hilali M, Yahyaoui A, et Chetto N. Etude de l'infestation des anguilles (*Anguilla anguilla*) par le parasite (*Anguillicola crassus*) dans l'estuaire du Sebou au nord-ouest du Maroc. Bulletin de l'Institut Scientifique, Rabat, section Sciences de la Vie. 2004-2005; 26-27:39-42.
15. Fazio G, Sasal P, Mouahid G, Lecomte-Finiger R, et Moné H. Swimbladder nematodes (*Anguillicoloides crassus*) disturb silvering in European eels (*Anguilla anguilla*). J Parasitol. 2012; 98:695-705.
16. Freyhof J, et Kottelat M. *Anguilla anguilla*. In: IUCN Red List of threatened species. IUCN, Gland. 2008. Available at [www.iucnredlist.org](http://www.iucnredlist.org) (accessed 28 Nov 2012).
17. Gargouri Ben Abdalal L, et Maarmouri F. Spatio-temporal dynamics of the nematode *Anguillicola crassus* in Northeast Tunisian lagoons. C.R. Biologies 2006; 329:785-789.
18. ICES. Report of the session of the joint EIFAC/ ICES Working Group on Eels, 2007 ICES CM 2007/ACFM: 23, 2007.
19. ICES. Report of the session of the joint EIFAC/ ICES Working Group on Eels, 2009a, ICES CM 2009/ACOM: 15, 2009.
20. ICES. Report of the Study Group on Anguillid Eels in Saline Waters (SGAESAW), ICES CM 2009/DFC: 06, 2009b.
21. Jakob E, Hanel R, Klimpel S, et Zumholz K. Salinity dependence of parasite infestation in the European eel *Anguilla anguilla* in northern Germany. ICES J Mar. Sci. 2009b; 66:358-366.
22. Knopf K, et Mahnke M. Differences in susceptibility of the European eel (*Anguilla anguilla*) and the Japanese eel (*Anguilla japonica*) to the swim bladder nematode *Anguillicola crassus*. Parasitology. 2004; 129(4):491-496.
23. Lefebvre F, Contournet P, Priour F, Soulas O, et Crivelli A.J. Spatial and temporal variation in *Anguillicola crassus* counts: results of a 4 year survey of eels in Mediterranean lagoons. Dis. Aquat. Organ 2002a, 50(3):181-188.
24. Lefebvre F, Contournet P, et Crivelli A.J. The health state of the eel swim bladder as a measure of parasite pressure by *Anguillicola crassus*. Parasitology. 2002b; 124:457-463.
25. Lefebvre F, et Crivelli A.J. Salinity effects on anguillicolosis in Atlantic eels: a natural tool for disease control. Marine Ecology Progress Series. 2012; 471:193-202.
26. Loucif N, Meddour A, et Samraoui B. Biodiversité des parasites chez *Anguilla anguilla* Linnaeus, 1758 dans le Parc National d'El Kala-Algérie. Eur J Sci Res. 2009; 25(2):300-309.
27. Loukili A, et Belghyti D. The dynamics of the nematode *Anguillicola crassus*, Kuwahara 1974 in eel *Anguilla anguilla* (L. 1758) in the Sebou estuary (Morocco). Parasitol. Res. 2007; 100:683-686.
28. Meddour A, Meddour-Bouderda K, et Bensouilah M. Bilan d'une pisciculture extensive et parasites des poissons de la lagune Mellah et du lac Oubeira (Parc National d'El Kala). Proceeding de J'NESMA 99, 1999, Alger du 29 au 31 mai 1999; 657-670.
29. Molnar K, Szekeley C, et Baska F. Mass mortality of eel in Lake Balaton due to *Anguillicola crassus* infection. Bull. Eur. Assoc. Fish Pathol. 1991; 11:211-212.
30. Moriarty C. Age determination and growth rate of eels, *Anguilla anguilla* (L). J Fish Biol. 1983; 23:257-264.
31. Münderle M, Sures B, et Taraschewski H. Influence of *Anguillicola crassus* (Nematoda) and *Ichthyophthirius multifiliis* (Ciliophora) on swimming activity of European eel *Anguilla anguilla*. Dis. Aquat. Organ. 2004; 60:133-139.
32. Neto A.F, Passos D, Costa J.L, Costa M.J, et Domingos I. Infection of *Anguilla anguilla* by the parasite *Anguillicoloides crassus* in Portuguese brackish water systems. Cah. Biol. Mar. 2014; 55:213-216.
33. Neumann W. Schwimmblasen parasit *Anguillicola* bei Aalen. Fischer und Teichwirt. 1985; 11:322.
34. Palstra A.P, Heppener D.F.M, van Ginneken V.J.T, Székely C, et van den Thillart G.E.E.J.M. Swimming performance of silver eels is severely impaired by the swimbladder parasite *Anguillicola crassus*. J Exp Mar Biol Ecol. 2007; 352:244-256.
35. Panfili J, Ximénes M-C, et Crivelli A.J. Sources of variation in growth of the European eel (*Anguilla anguilla*) estimated from otoliths. Can J Fish Aquatic Sci. 1994; 51:506-515.
36. Panfili J, Pomuai H. (de), Troadec H, et Wright P.J. (éd.) Manuel de sclérochronologie des poissons. Coédition Ifremer-IRD, 2002, 464.
37. Peters G. et Hartmann F. *Anguillicola*, a parasite nematode of the swimbladder spreading among eel populations in Europe. Dis. Aquat. Organ 1986, 1:229-230.
38. Sauvaget B, Fatin D, et Briand C. Contamination par *Anguillicola crassus* de cinq populations d'anguilles (*Anguilla anguilla*) du littoral de Bretagne sud (France). Bull. Fr. Pêche Piscic, 2003; 368:21-26.
39. Sinha V.R.P, et Jones J.W. On the age and growth of the freshwater eel (*Anguilla anguilla*). J Zool. 1967a; 153:99-117.
40. Sloane R.D. Upstream migration by young pigmented freshwater eels (*Anguilla australis australis* Richardson) in Tasmania. Australian J Mar Freshw Res. 1984; 35:61-73.
41. Sures B, et Knopf K. Individual and combined effects of cadmium and 3, 3', 4, 4', 5-pentachlorobiphenyl (PCB 126) on the humoral immune response in European eel (*Anguilla anguilla*) experimentally infected with larvae of

- Anguillicola crassus* (Nematoda). Parasitology, 2004; 128:1-10.
42. Szekely C. Paratenic hosts for the parasitic nematode *Anguillicola crassus* in Lake Balaton, Hungary. Dis. Aquat. Organ, 1994; 18:11-20.
  43. Thomas K, et Ollevier F. Paratenic hosts of the swim bladder nematode *Anguillicola crassus*. Dis. Aquat. Organ 1992a; 13:165-174.
  44. Tzeng W-N, Iizuka Y. Identification and growth rates comparison of divergent migratory contingents of Japanese eel (*Anguilla japonica*). Aquaculture, 2003; 216:77-86.
  45. Verreault G, et Dumont P. An estimation of American eel escapement from the Upper St. Lawrence River and Lake Ontario in 1996 and 1997, in D.A. Dixon (éd.), Biology, Management, and Protection of Catadromous Eels, American Fisheries Society Symposium 33 (Missouri), 2003, 243-251.
  46. Vollestad L.A. Geographic variation in age and length at metamorphosis of maturing european eel: environmental effects and phenotypic plasticity. J Anim Ecol. 1992; 61:41-48.