



International Journal of Fisheries and Aquatic Studies

ISSN: 2347-5129

(ICV-Poland) Impact Value: 5.62

(GIF) Impact Factor: 0.352

IJFAS 2016; 4(1): 330-334

© 2016 IJFAS

www.fisheriesjournal.com

Received: 14-11-2015

Accepted: 15-12-2015

ManiRam Prasad

Department of Zoology,
D.D.U. Gorakhpur University,
Gorakhpur 273009, India.

Abhishek Kumar

Department of Zoology,
D.D.U. Gorakhpur University,
Gorakhpur 273009, India.

Sunil K Srivastav

Department of Zoology,
D.D.U. Gorakhpur University,
Gorakhpur 273009, India.

Ajai K Srivastav

Department of Zoology,
D.D.U. Gorakhpur University,
Gorakhpur 273009, India.

Correspondence

Ajai K Srivastav

Department of Zoology,
D.D.U. Gorakhpur University,
Gorakhpur 273009, India.

Response of prolactin cells of stinging catfish, *Heteropneustes fossilis* to *Euphorbia royleana* treatment

ManiRam Prasad, Abhishek Kumar, Sunil K Srivastav, Ajai K Srivastav

Abstract

Effect of *Euphorbia royleana* on prolactin cells were investigated in *Heteropneustes fossilis*. Fish were subjected to 2.47mg/L and 0.618 mg/L of *Euphorbia royleana* for short- and long-term, respectively. Blood was collected on 24, 48, 72 and 96 h in short-term and after 7, 14, 21, and 28 days in long-term experiment and was analyzed for serum calcium levels. Pituitary glands were fixed on 24, 48, 72 and 96 h in short-term and after 7, 14, 21, and 28 days in long-term experiment. Serum calcium levels of treated *H. fossilis* declined progressively from 48 h till 96 h. Latex of *Euphorbia royleana* provoked a decrease in serum calcium level on day 7 which progresses till 28 days. No histological alteration was observed in prolactin cells throughout the short- term exposure of *Euphorbia royleana*. Nuclear volume of prolactin cells exhibited an increase after 14 day. Also these cells exhibited degranulation. These changes increased progressively 21 day onwards. Degenerating cells were discerned after 28 day following the treatment.

Keywords: Botanical pesticide, Calcium, Teleost, Pituitary gland.

1. Introduction

Due to the prohibitive cost of synthetic pesticides and hazards caused by their persistence in the environment, there is a growing interest in the use of botanical pesticides for crop protection. Botanical pesticides are phytochemicals that have evolved in plants for defence against phytophagous insects^[1, 2]. Some plants contain components that are toxic to animals. Nicotine, rotenone and pyrethrins have been widely used in both small-scale subsistence farming as well as in commercial agriculture. Therefore, they are not very selective but target a broad range of insects. This means that even beneficial and non target organisms can be affected. Furthermore, botanical pesticides are generally highly bio-degradable, so that they become inactive within hours or a few days. This reduces again the negative impact on beneficial organisms^[3, 4]. However, despite being natural and widely used in agricultural systems, some botanicals may be dangerous for humans and they can be very toxic to natural enemies. For example nicotine, derived from tobacco plant, is one of the most toxic organic poisons for humans and other warm-blooded animals^[5, 6]. Before a new botanical pesticide applied in large scale, its effect on ecosystem should be tested in a small field experiment.

The chemical constituents of plants of the Euphorbiaceae family include phenolic compounds (flavonoids, coumarins, lignans, tannins, quinones, phenanthrenes, phenolic acids, etc.), triterpenoids and related compounds (alcohols, sterols and hydrocarbons), alkaloids, cyanogenic glucosides and glucosinolates^[7]. Various parts of *Euphorbia royleana* have insecticidal and molluscicidal properties^[8, 9]. The latex of *Euphorbia royleana* has been reported as an irritant to the eye and skin^[10].

Removal of pituitary gland caused a decline in the serum/plasma calcium level of freshwater fish^[11, 12]. Hypophysectomized killifish kept in calcium-deficient seawater exhibited hypocalcemia^[13] suggesting that killifish pituitary possess a hypercalcemic factor. Recently, a role of prolactin during organogenesis in Zebra fish^[14] and in nuptial colouration in female fish has been reported Skold *et al.*^[15].

Several studies were carried on the impact of environmental toxicants on fish, e.g., behavioural responses^[16, 17], histopathology of vital organs^[18-21], hematological anomalies^[22-27], but there exists no information regarding the impact of botanical pesticides (excluding synthetic pyrethroids) on the prolactin cells of the fish. Keeping this in view an attempt has been made to study the effects of latex of *Euphorbia royleana* on the histological alterations in the prolactin cells of a teleost, *H. fossilis*.

2. Materials and Methods

Adult freshwater teleost *Heteropneustes fossilis* (both sexes body weight 27 – 38 g) were collected from Ramgarh Lake Gorakhpur, India, Latitude- 26.765844 and Longitude- 83.364944. Healthy fish showing no external signs of injury and disease were selected for experiments and were acclimatized to laboratory conditions (under natural photoperiod 11.46 – 12.18 and temperature 26.74 ± 2.11 °C; pH 7.26 ± 0.09 ; hardness 167.97 ± 5.69 mg/L as CaCO₃; dissolved oxygen 7.85 ± 0.36 mg/L) for 15 days in dechlorinated tap water. The white milky latex of *Euphorbia royleana* was drained into glass tubes by cutting the stems and bark. The latex was lyophilized at -40 °C and the lyophilized powder was stored at -20 °C under dark until further use.

In the present study, latex of *Euphorbia royleana* was used. The 96 h LC₅₀ value of latex of *Euphorbia royleana* (3.090 mg/L for the fish *H. fossilis*) have been reported by Prasad *et al.* [28]. Latex of *Euphorbia royleana* was weight and stock solution (4 mg/ml) was prepared in 100% ethanol. In short term exposure the fish were subjected to sub-lethal dose 2.47mg/L of latex of *Euphorbia royleana* (80% of 96 h LC₅₀ value). In long term exposure the fish were subjected to 0.618 mg/L (20% of 96 h LC₅₀ value) of latex of *Euphorbia royleana*. Simultaneously, a control group was also run for comparison by using the tap water containing ethanol (ethanol was used as the latex of *Euphorbia* was dissolved in ethanol so in control also ethanol was added). Fish were kept in groups of 10 in 40 L media. Six fish were sacrificed on each time intervals from control and experimental (*Euphorbia royleana*) groups after 24, 48, 72 and 96 h in short-term exposure and after 7, 14, 21 and 28 days in long term experiment.

Blood samples were collected by sectioning of the caudal peduncle of fish. The sera were separated by centrifugation at 3500 r. p. m. and analyzed for calcium levels (calcium kit, RFCL Limited India). After collection of blood samples, the pituitary glands along with the brain were fixed in aqueous Bouin's fluid and Bouin's-Hollande fixatives for histological studies. Tissues, thus fixed were routinely processed in graded series of alcohols, cleared in xylene, and then embedded in paraffin wax and serial sections were cut at 6 µm. The pituitaries were stained with Herlant tetrachrome and Heidenhain's azan techniques.

Nuclear indices (maximal length and maximal width) of prolactin cells were determined (50 nuclei were measured per specimen; thus 300 nuclei were measured from six specimens) were taken with the aid of ocular micrometer and then the nuclear volume was calculated as volume = $\frac{4}{3} \pi ab^2$, where 'a' is the major semi-axis and 'b' is the minor semi-axis.

All samples were estimated in duplicate. All data were presented as the mean \pm S.E. of six specimens and student's 't' test was used for the determination of statistical significance. In all studies, the experimental group was compared to its specific time control group. Two-way Analysis of Variance (ANOVA) was used for multiple group comparisons.

3. Result

No alteration has been noticed in the serum calcium levels of *H. fossilis* at 24 h following the *Euphorbia royleana* exposure. The levels decline progressively from 48 h till 96h. (Fig. 1). Analysis of variance indicated that the level of serum calcium were significantly different between groups (between intervals F = 20.80, $P < 0.0001$ between treatment F = 169.51, $P < 0.0001$).

Latex of *Euphorbia royleana* provoked a decrease in the serum calcium level on day 7. This decrease continued progressively

till the close of the experiment (28 days) (Fig. 2). Analysis of variance indicated that the level of serum calcium were significantly different between groups (between intervals F = 14.41, $P < 0.0001$ between treatment F = 152.17, $P < 0.0001$). The structural details of prolactin cells of control fish (Fig. 3) are almost similar to that of normal fish.

No histological alteration has been observed throughout the short-term exposure with latex of *Euphorbia royleana* in the prolactin cells of fish *H. fossilis* (Fig. 4). Analysis of variance indicated that in short-term experiment the nuclear volume of prolactin cells were not significant (between intervals F=0.22, $P < 0.881$, ns; between treatments F = 0.16, $P < 0.696$, ns)

The prolactin cells remain unaltered till day 7 following exposure to latex of *Euphorbia royleana*. The nuclear volume of these cells exhibits an increase after 14 day (Fig. 5). Also these cells exhibit degranulation (Fig. 6). These changes increase progressively 21 day onwards (Fig. 6). Moreover, few degenerating cells are discerned after 28 day following the treatment (Fig. 7). Analysis of variance indicated that in long-term experiment the nuclear volume of prolactin cells were significantly different between groups (between intervals F = 21.18, $P < 0.0001$; between treatment F = 85.78, $P < 0.0001$).

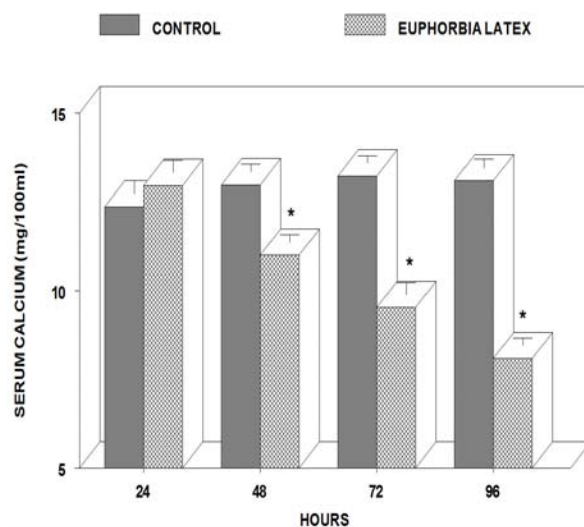


Fig 1: Serum calcium levels of short-term latex of *Euphorbia royleana* treated *H. fossilis*. Values are mean \pm SE of six specimens. Asterisk indicates significant differences ($P < 0.05$) from control group.

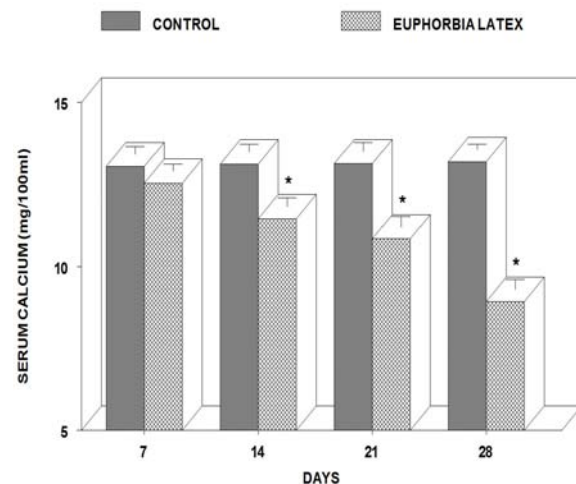


Fig 2: Serum calcium levels of long-term latex of *Euphorbia royleana* treated *H. fossilis*. Values are mean \pm SE of six specimens. Asterisk indicates significant differences ($P < 0.05$) from control group.

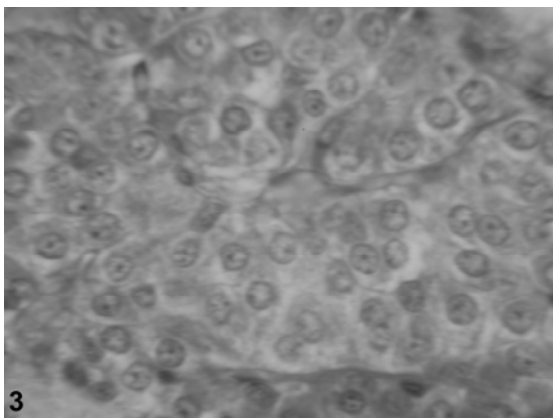


Fig 3: Prolactin cells of control *Heteropneustes fossilis*. Herlant tetrachrome X 800.

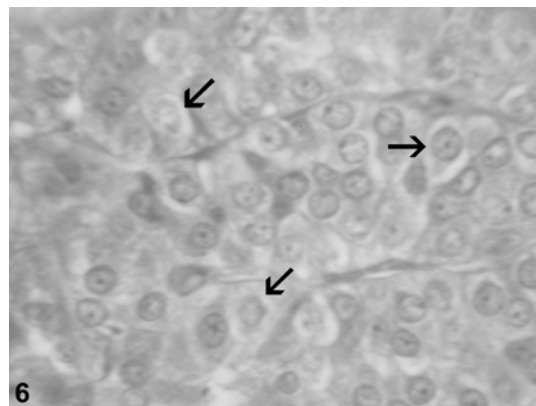


Fig 6: Prolactin cells of 14 days latex of *Euphorbia royleana* treated *Heteropneustes fossilis* showing degranulation (arrows). Herlant tetrachrome X 800.

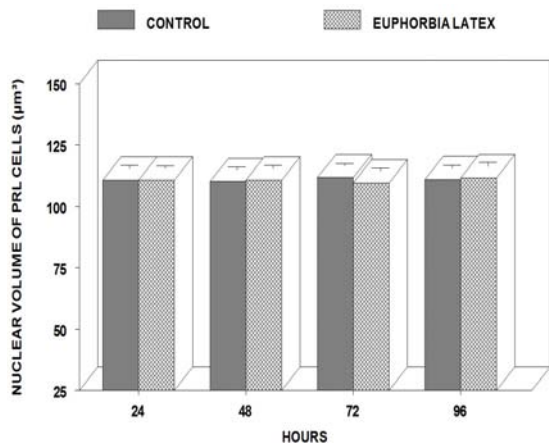


Fig 4: Nuclear volume prolactin cells of short-term latex of *Euphorbia royleana* treated *Heteropneustes fossilis*. Each value represents mean \pm S.E. of six specimens.

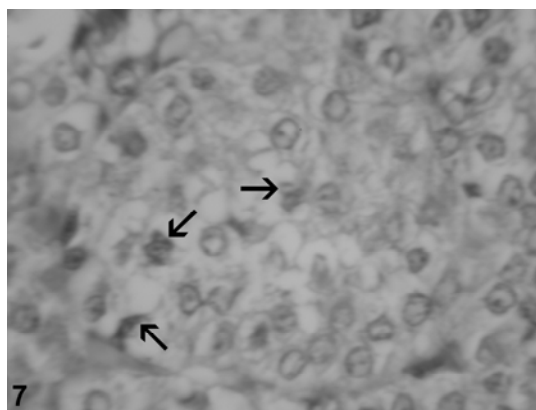


Fig 7: Prolactin cells of 28 days latex of *Euphorbia royleana* treated *Heteropneustes fossilis* showing degeneration (arrows). Herlant tetrachrome X 800.

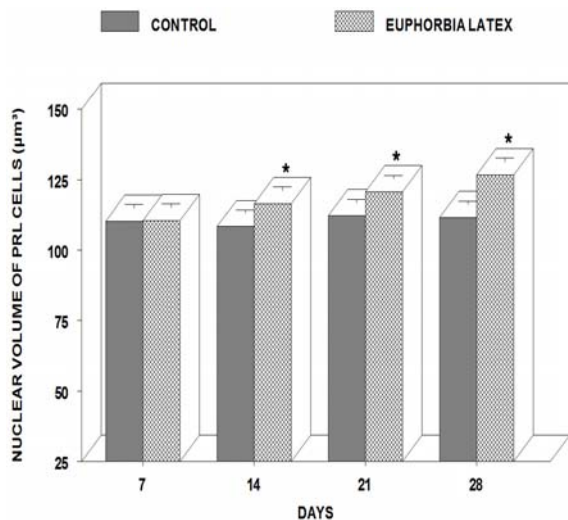


Fig 5: Nuclear volume of prolactin cells of long-term latex of *Euphorbia royleana* treated *Heteropneustes fossilis*. Each value represents mean \pm S.E. of six specimens. Asterisk indicates significant differences ($P < 0.05$) from control.

4. Discussion

Latex of *Euphorbia royleana* exposure resulted into hyperactivated prolactin cells which is expressed by degranulation and increased nuclear volume. Response of prolactin cell activity after exposure to pollutants has been studied by James and Wigham [29], Fu [30], Mishra *et al.* [31, 32], Srivastav *et al.* [33]. The observation regarding hyperactivated prolactin cells in treated fish is in agreement with the reports of earlier investigators who have also noticed increased activity of prolactin cells after exposure of fish to toxicants— cadmium (tilapia- Fu) [30], metacid (catfish- Mishra *et al.*) [31], cypermethrin (catfish- Mishra *et al.*) [32], deltamethrin (catfish- Srivastav *et al.*) [33] and *Nerium indicum* (catfish- Prasad *et al.*) [35]. James and Wigham [29] failed to observe any effect on prolactin cell activity following cadmium injection to rainbow trout. The present study derives support from the studies of Meredith *et al.* [35], Thangavel *et al.* [36, 37] Ramesh *et al.* [38] who have reported increased levels of prolactin in fish exposed to.

In fish hypercalcemia has been reported by prolactin treatment [39-45]. This response of prolactin in fish has been caused by controlling the gill epithelium permeability [46-48]. Hyperactivity of prolactin cells in latex of *Euphorbia royleana* treated fish can be attributed to the action of prolactin to maintain the ionic balance in blood of latex of *Euphorbia royleana* exposed *H. fossilis* through regulation of efflux/influx at gill, kidney and bone.

5. Conclusion

The present study reflects that *Euphorbia royleana* affect the blood calcium and activity of prolactin cells of *H. fossilis*. Calcium has been correlated with the functioning of several vital functions. Similarly prolactin controls the ionic permeability at gills. Hence any change in calcium and prolactin cells would severely affect the growth, vital functions, survival of the species in the nature and also reproductive activity of the organism. Therefore, uses of botanical pesticides near fish inhabiting reservoirs must be taken with great care and precaution

6. References

- Chen Ming-Shun. Inducible direct plant defense against insect herbivores: A review. *Insect Science*. 2008; 15:101-104.
- War AS, Paulraj MG, Ahmad T, Buhroo AA, Hussain B, Ignacimuthu S *et al*. Mechanism of plant defense against insect herbivores. *Plant Signal Behav*. 2012; 7:1306-1320.
- Philip GK, Robert AB. Florida Pest Control Association. www.oisat.org/downloads/whatspesticide.html, 1998 (Accessed Jan. 2010)
- Kamatenesi-Mugisha M, Buyungo JP, gwang PE, Kasibante A, Deng AL, Ogendo JO, *et al*. Oral acute toxicity study of selected botanical pesticide plants used by subsistence farmers around the Lake Victoria Basin. *African J Environ Sci Techno*. 2013; 7:93-110.
- Larson PS, Haag HB, Silvette H. Tobacco experimental and clinical studies: a comprehensive account of the world literature. Baltimore: The Williams & Wilkins Company. 1961, 464-471.
- Mayer B. How much nicotine kills a human? Tracing back the generally accepted lethal dose to dubious self-experiments in the nineteenth century. *Arch Toxicol*. 2014; 88(1):5-7.
- Abdel-Fattah MR. The chemical constituents and economic plants of the Euphorbiaceae. *Botanical J Linnean Society*. 1987; 94(1):293-326.
- Srivastava VK, Singh SK, Rai M, Singh A. Toxicity of *Nerium indicum* and *Euphorbia royleana* lattices against *Culex quinquefasciatus* mosquito larvae. *Nigerian J Nat Prod Med*. 2003; 7:61-64.
- Tiwari S, Singh SK, Singh A. Toxicological effect and biochemical alteration induced by different fractions of *Euphorbia royleana* latex in freshwater harmful vector Snail *Lymnea acuminata*. *Indian J Exp Biol*. 2004; 42(12):1220-1225.
- Basak SK, Bakshi PK, Basu S, Basak S. Keratouveitis caused by *Euphorbia* plant sap. *Indian J Ophthalmol*. 2009; 57(4):311-313.
- Wendelaar Bonga SE, Pang PKT. In *Vertebrate Endocrinology: Fundamentals and Biomedical Implications*. Academic Press, New York. 1989; 3:207.
- Srivastav Ajai K, Wendelaar Bonga SE, Flik G. Plasma calcium and stanniocalcin levels of male tilapia, *Oreochromis mossambicus* fed with calcium-deficient food and treated with 1,25(OH)₂D₃. *Gen Comp Endocrinol*. 1998; 110(3):290-294.
- Pang PKT, Griffith RW, Pickford GE. Hypocalcemia and tetanic seizures in hypophysectomized killifish, *Fundulus heteroclitus*. *Proc Soc Exp Biol Med*. 1971; 136(1):85-87.
- Nguven N, Stellwag EJ, Jhu Y. Prolactin dependent modulation of organogenesis in the vertebrate: Recent discoveries in Zebrafish. *Comp Biochem Physiol C Toxicol Pharmacol*. 2008; 148(4):370-380.
- Skold HN, Amundsen T, Svensson PA, Mayer I, Bjelvenmark J, Forsgren E. Hormonal regulation of female nuptial coloration in a fish. *Horm Behav*. 2008; 54(4):549-556.
- Prasad M, Kumar A, Mishra D, Srivastav SK, Suzuki N, Srivastav Ajai K. Acute toxicities of diethyl ether and ethanol extracted *Nerium indicum* leaf to the fish, *Heteropneustes fossilis*. *Nig J Nat Prod Med*. 2009; 13:53-57.
- Srivastava AK, Mishra D, Srivastava S, Srivastav SK, Srivastav Ajai K. Acute toxicity and behavioural responses of *Heteropneustes fossilis* to an organophosphate insecticide, dimethoate. *Internat. J Pharm Bio Sci*. 2010; 1(4):359-363.
- Srivastava SK, Tiwari PR, Srivastav Ajai K. Chlorpyrifos induced histological changes in the gill of freshwater catfish *Heteropneustes fossilis*. *Bolet Fisiol Anim*. 1989; 13:23-28.
- Srivastava SK, Tiwari PR, Srivastav Ajai K. Effects of chlorpyrifos on the kidney of freshwater catfish *Heteropneustes fossilis*. *Bull Environ Contam Toxicol*. 1990; 45(5):748-751.
- Poleksic V, Karan V. Effects of trifluralin on carp: biochemical and histological evaluation. *Ecotox Environ Saf*. 1999; 43(2):213-221.
- Kumar A, Prasad M, Srivastava K, Tripathi S, Srivastav Ajai K. Branchial histopathological study of catfish *Heteropneustes fossilis* following exposure to purified neem extract, azadirachtin. *World J Zool*. 2010a; 5 (4):239-243.
- Harikrishnan R, Balasundaram C, Kim M, Kim J, Heo M. Effective administration route of azadirachtin and its impact on haematological and biochemical parameters in goldfish (*Carassius auratus*) infected with *Aeromonas hydrophila*. *Bull Vet Inst Pulawy*. 2009; 53(4):613-619.
- Kumar A, Prasad M, Mishra D, Srivastav SK, Srivastav Ajai K. Effects of *Euphorbia tirucalli* latex on blood calcium and phosphate of the freshwater air-breathing catfish *Heteropneustes fossilis*. *Toxicol Environ Chem*. 2010b; 1(1):1-8.
- Kumar A, Prasad M, Mishra D, Srivastav SK, Srivastav Ajai K. Botanical pesticide, azadirachtin attenuates blood electrolytes of a freshwater fish *Heteropneustes fossilis*. *Pest Biochem Physiol*. 2010c; 99(2):170-173.
- Prasad M, Kumar A, Mishra D, Srivastav SK, Srivastav Ajai K. Blood electrolytes of a freshwater catfish *Heteropneustes fossilis* in response to treatment with a botanical pesticide, *Euphorbia royleana* latex. *Integrat Zool*. 2011a; 6(2):150-156.
- Prasad M, Kumar A, Mishra D, Srivastav SK, Srivastav Ajai K. Alterations in blood electrolytes of a freshwater catfish, *Heteropneustes fossilis* in response to treatment with a botanical pesticide, *Nerium indicum* leaf extract. *Fish Physiol Biochem*. 2011b; 37(3):505-510.
- Rai R, Tripathi S, Mishra D, Srivastav SK, Srivastav Ajai K. Cadmium-induced changes in the corpuscles of Stannius of a freshwater teleost, *Heteropneustes fossilis*. *Egypt J Biolo*. 2010; 12:74-80.
- Prasad M, Kumar A, Mishra D, Srivastav SK, Srivastav Ajai K. Acute toxicity of *Euphorbia royleana* latex on freshwater catfish, *Heteropneustes fossilis*. *Acta Toxicol Argent*. 2010; 18(1):5-9.
- James VA, Wigham T. The effects of cadmium on

- prolactin cell activity and plasma cortisol levels in the rainbow trout (*Salmo gairdneri*). *Aquat Toxicol.* 1986; 8(4):273-280.
30. Fu H. Hormonal responses of fish to cadmium. Ph.D. Thesis, University of Nijmegen, the Netherlands, 1989.
 31. Mishra D, Srivastav SK, Suzuki N, Srivastav Ajai K. Prolactin cells of a teleost, *Heteropneustes fossilis* intoxicated with Metacid-50. *Int J Biol Chem Sci.* 2008; 2(3):339-345.
 32. Mishra D, Srivastav SK, Suzuki N, Srivastav Ajai K. Corpuscles of Stannius of a freshwater teleost, *Heteropneustes fossilis* in response to metacid-50 treatment. *J Applied Sci Environ Management.* 2009; 13(3):69-77.
 33. Srivastav Ajai K, Srivastava SK, Mishra D, Srivastav SK. Deltamethrin-induced alterations in serum calcium and prolactin cells of a freshwater teleost, *Heteropneustes fossilis*. *Toxicol Environ Chem.* 2010; 92(10):1857-1864.
 34. Prasad M, Kumar A, Suzuki N, Srivastav Ajai K. Botanical pesticide *Nerium indicum* alters prolactin cells of stinging catfish, *Heteropneustes fossilis*. *Int J Zool Invest.* 2015; 1(1):77-84.
 35. Meredith HO, Richman NH, Collier JT, Seale AP, Riley LG, Ball CH *et al.* Pesticide effects on prolactin release from the rostral pars distalis and their effects on growth in the tilapia. In *Environmental toxicology and risk assessment: Standardization of biomarkers for endocrine disruption and Environmental assessment.* American society for Testing and materials (ASTM), STP 1364, west Conshohocken, PA. 1999; 8:239-253.
 36. Thangavel P, Sumathirai K, Karthikeyan S, Ramaswamy M. Endocrine response of the freshwater teleost, *Sarotherodon mossambicus* (peters) to dimecron exposure. *Chemosphere.* 2005; 61(8):1083-1092.
 37. Thangavel P, Sumathirai K, Maheshwari S, Rita S, Ramaswamy M. Hormone profile of an edible, freshwater teleost, *Sarotherodon mossambicus* (peters) under endosulfan toxicity. *Pestic Biochem Physiol.* 2010; 97(3):229-234.
 38. Ramesh M, Saravanan M, Kavitha C. Hormonal responses of the fish *Cyprinus carpio*, to environmental lead exposure. *African J Biotech.* 2009; 8(17):4154-4158.
 39. Pang PKT, Schreiberman MP, Balbontin F, Pang RK. Prolactin and pituitary control of calcium regulation in the killifish, *Fundulus heteroclitus*. *Gen Comp Endocrinol.* 1978; 36(2):306-316.
 40. Wendelaar Bonga SE, Flik G. Prolactin and calcium metabolism in a teleost fish *Sarotherodon mossambicus*. In *Comparative Endocrinology of Calcium Regulation.* Jpn Sci Soc Press Tokyo. 1982, 19-26.
 41. Flik G, Fenwick JC, Kolar Z, Mayer-Gostan N, Wendelaar Bonga SE. Effects of ovine prolactin on calcium uptake and distribution in the freshwater cichlid teleost fish, *Oreochromis mossambicus*. *Am J Physiol.* 1986; 250(2):161-166.
 42. Flik G, Rentier-Delrue F, Wendelaar Bonga SE. Calcitropic effects of recombinant prolactins in *Oreochromis mossambicus*. *Am J Physiol.* 1994; 266(4):1302-1308.
 43. Wendelaar Bonga SE, Pang PKT. Control of calcium regulating hormones in the vertebrates: Parathyroid hormone, calcitonin, prolactin and stanniocalcin. *Int Rev Cytol.* 1991; 128:139-21.
 44. Srivastav Ajai K. Effect of 1,25 dihydroxycholecalciferol administration on prolactin cells of the freshwater catfish *Clarias batrachus*. *Zool Jb Physiol.* 1989; 93:241-244.
 45. Srivastav Ajai K, Singh Purnima. Response of prolactin cells of the freshwater mud eel, *Amphipnous cuchia* to vitamin D₃ administration. *Zool Jb Physiol.* 1989; 93:235-240.
 46. Dharmamba M, Maetz J. Effects of hypophysectomy and prolactin on the sodium balance of *Tilapia mossambica* in freshwater. *Gen Comp Endocrinol.* 1972; 19(1):175-183.
 47. Clark WC, Bern HA. Comparative endocrinology of prolactin. In *Hormonal Proteins and Peptides*, Academic Press, New York. 1980; 8:105-197.
 48. Wendelaar Bonga SE, Lowik CJM, Van der Meij JCA. Effects of Mg²⁺ and Ca²⁺ on branchial osmotic water permeability and prolactin secretion in the teleost fish *Sarotherodon mossambicus*. *Gen Comp Endocrinol.* 1983; 52(2):222-231.